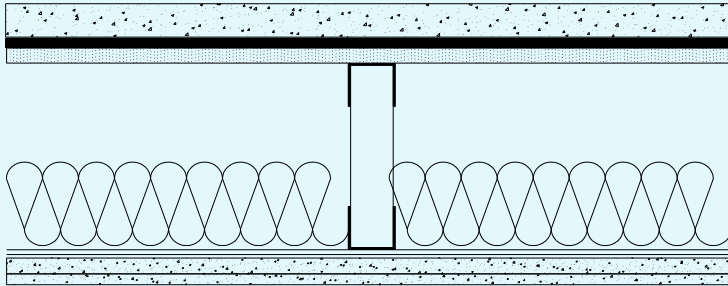




## Acoustic Test Data Sheet 20

### SEPARATING FLOOR



40mm Gyvlon levelling screed  
laid over 10mm Ethafoam on 18mm  
weather resistant chipboard

225mm lattice steel joists with 100mm  
Rockwool RW45 in cavity

19mm Lafarge plank and 12.5mm Firecheck  
wallboard on RB3000 resilient bar

#### SITE

#### TEST ORGANISATION

#### REPORT / TEST No. / TEST DATE

#### TEST METHOD

#### RESULTS

Newcastle Street, Stone, Staffs

Philip E Jones

031201 / 03/12/01 and 01i / 10th December 2003

BS EN ISO 140-4 and 7: 1998

DnT,w (C ; Ctr) - 61 (-2 ; -7) Db

DnT,w + Ctr - 54 dB

L'nT,w (CI) - 62 (-6) dB

#### FLOOR CONSTRUCTION

- 40mm Gyvlon levelling screed applied over two layers of 5mm Ethafoam.
- 18mm water resistant chipboard.
- 225mm Lattice steel joists with 100mm Rockwool RW45 in cavity.
- Lafarge RB3000 resilient bar fixed to underside of joists.
- A ceiling comprising 19mm Lafarge plank and 12.5mm Firecheck wallboard.

The results show that this floor system, as tested in conjunction with the associated constructions detailed above, is able to achieve the sound insulation performance required in the Building Regulations 2000, Approved Document E, 2003 Edition.

If this floor system were to be used on site with an equivalent construction and same build quality, similar results would be expected.

#### BUILDING CONSTRUCTION DETAILS

##### General

Newly built block of flats comprising steel framed external walls and separating walls and steel joist separating floors.

##### External walls

100mm steel studs lined externally with 35mm Kingspan poly-isocyanurate rigid insulation board.

Brickwork outer leaf to first two floors and a tiled mansard construction to the third.

Inner lining of two layers of 12.5mm Lafarge Firecheck wallboard with 85mm Rockwool RW45 in frame.

##### Separating walls

Two 100mm steel frames set 85mm apart. 85mm Rockwool RW45 full height in the space between frames and 600mm from base and head in each stud frame cavity.

Outer faces of frame lined with 19mm Lafarge plank and 12.5mm Firecheck wallboard.

The information above must NOT be reproduced without the prior written consent of Lafarge Gyvlon Ltd Issue 2—Revision 0—01-12-10

**Lafarge Gyvlon Limited**

Unit 221 Europa Boulevard,  
Westbrook, Warrington WA5 7TN

sales@gyvlon.co.uk  
01925 428780



[www.gyvlon.co.uk](http://www.gyvlon.co.uk)



Calcium Sulfate binder  
EN 13454-CAB-30



greenspec®