



## THE THIN AND LIGHTWEIGHT FLOWING SCREED SOLUTION

Part of the **Gyvlon®** 'liquid flowing screed' range, **FINIO®** technology has been developed to offer a very thin readymix screed solution with minimal thickness of 15 mm<sup>a</sup> (unbonded), 25 mm<sup>b</sup> (resilient/acoustic layer) or 30 mm<sup>c</sup> (floating insulation).

Thanks to the combination of low thickness and reduced weight, Gyvlon® **FINIO®** is the ideal flowing screed solution for projects, particularly in renovation, where ceiling heights and/or low floor weights are key.

a: 15 mm thickness applicable for up to 30% of the screed area laid  
b: The acoustic performance of the total buildup of the floor will have to be checked  
c: insulation must be a minimum 140kPa if not then 35mm domestic, 40mm commercial applies

### WHAT DOES FINIO® OFFER?

- + Thin section:** Up to **60% thickness** reduction when unbonded vs. traditional screed
- + Lightweight:** Down to 40 kg/m<sup>2</sup> when unbonded, offering up to **60% lighter** solution compared to traditional screed
- + Savings:** Readymix solution, no site mixing, no bag storage, ensuring a **high productivity**
- + Versatility:** Suitable for most floor conditions and **all kinds of floor finish**

### ALL THE BENEFITS OF GYVLON® SCREED PRODUCTS

**FINIO®** technology has all the benefits that you have to come to expect from a Gyvlon® screed product based on 30 years' experience:

- **Very high fluidity** for fast installation
- **No shrinkage** greatly reduced cracking, no curling
- **Large bay sizes** up to 800m<sup>2</sup>
- **No reinforcement**
- **No curing membrane**
- **SR2 surface finish** achievable
- **Environmentally friendly**, greatly reduced CO<sub>2</sub> and carbon content

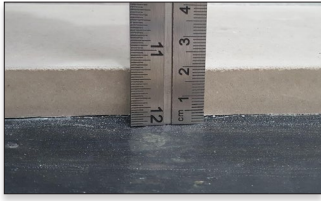
**MAIN FEATURES**

- ➔ **Down to 15 mm<sup>a</sup> (unbonded), 25 mm<sup>b</sup> (resilient layer) or 30 mm<sup>c</sup> (floating insulation)**
- ➔ **Up to 60% weight reduction**
- ➔ **Cost-efficient solution**
- ➔ **Highly versatile screed**

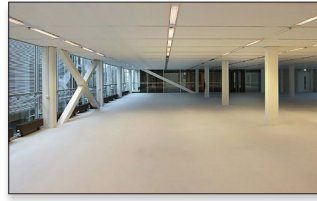
**EPD® LOW CARBON SOLUTION**  
**<90% REDUCTION**

- EXCELIO®** TECHNOLOGY: The ultra-thin readymix flowing subbase leveller
- FINIO®** TECHNOLOGY: The thin and lightweight flowing screed solution
- THERMIO® MAX** TECHNOLOGY: The guaranteed ultra-efficient screed for underfloor heating
- XTR®** FD|E2C TECHNOLOGY: The strongest screed for the most demanding situations
- ECO** FD|E2C TECHNOLOGY: The Gyvlon® screed version with faster drying (FD) and early to cover (E2C®)
- ECO** TECHNOLOGY: Anhydritec's versatile Gyvlon® screed

# THE THIN AND LIGHTWEIGHT FLOWING SCREED SOLUTION



Gyvlon® FINIO® offers the best choice among all screed options when you are looking for a **thin, light and cost-effective solution.**



Using anhydrite natural stability and **Anhydritec® expertise** in screed formulation, **FINIO®** provides excellent stability over time with **greatly reducing cracking and no curling.**

	Traditional sand cement	Flowing cementitious	ECO TECHNOLOGY	FINIO TECHNOLOGY
	THICK SECTION	REDUCED SECTION	REDUCED SECTION	THINNEST OPTION
DESIGN SCOPE	—	★★	★★★★	★★★★★
STABILITY	★ Can shrink, crack & curl	★★★★ Can shrink, crack & curl	★★★★★ No shrinkage greatly reduced cracking & no curling	★★★★★ No shrinkage greatly reduced cracking & no curling
WEIGHT	100 kg/m <sup>2</sup>	77 kg/m <sup>2</sup>	60 kg/m <sup>2</sup>	40 kg/m <sup>2</sup>

## OUTSTANDING PERFORMANCE

TECHNICAL CHARACTERISTICS	
Mechanical strength	C30-F7
Dry density	2050 kg/m <sup>3</sup> (+/-200)
Design minimal thickness	15 mm <sup>a</sup> unbonded 25 mm <sup>b</sup> resilient layer 30 mm <sup>c</sup> floating (domestic) 35 mm <sup>c</sup> floating (commercial)
Substrate type	Suitable for most substrates
Surface regularity	SR2 – BSEN 8204-7
Reinforcement	Requires no reinforcement

INSTALLATION BENEFITS	
Flow	280 mm (± 10 mm)
Bay size	Up to 800 m <sup>2</sup> (area layout to be considered)
Productivity	Up to 200 m <sup>2</sup> / hour or 2000 m <sup>2</sup> / day

**Gyvlon FINIO® is a technology developed by Anhydritec®**

- a. 15 mm thickness applicable for up to 30% of the screed area laid
- b. a suitable acoustic lay must be used and the floor's total build-up will have to be acoustically checked below 40 mm thickness of screed
- c. insulation must be a minimum 140 kPa if not then 35 mm domestic, 40 mm commercial applies



[www.gyvlon.co.uk](http://www.gyvlon.co.uk) [www.anhydritec.com](http://www.anhydritec.com)

ANHYDRITEC LTD - Unit 221, Europa Boulevard, Westbrook, Warrington, WA5 7TN - T. 01925 428 780 - [anhydritec.enquiries.uk@minersa.com](mailto:anhydritec.enquiries.uk@minersa.com)